



Open the archives

The Victorian Archives Centre threw open its doors in late July as part of Open House Melbourne, as senior communications advisor Tara Oldfield (pictured) gave *North West City News* a rare glimpse beyond the airlocked doors preserving records dating back to 1836. Find out what's on in August on page 4. *Photo: Hanna Komissarova.*

Writing's on the wall: Parliamentary Inquiry's final flood report released

Flemington Racecourse's controversial floodwall is in jeopardy after the parliamentary inquiry into the October 2022 flood event in Victoria tabled its final report in July.

WORDS BY
DAVID ALLEN



remained "committed to working with Melbourne Water and other relevant authorities on the matter".

The Legislative Council's Environment and Planning Committee's final report into the 2022 floods made 90 findings and 73 recommendations, pulling no punches in its assessment of emergency management at the time.

The report found that locals were insufficiently warned and prepared, while emergency services lacked resources and coordination.

It recommends sweeping reforms for state and local governments across planning, preparedness, and floodplain infrastructure and management.

At-risk households could even be subject to government buybacks, retrofitting or raising.

Melbourne's river catchments are the only ones in Australia where forecast and warning services are not managed by the Bureau of Meteorology (BoM).

A BoM spokesperson said a transfer of those services from Melbourne Water to the Bureau was under way but wouldn't be completed until July 2026.

North West City News contacted Melbourne Water for comment.

Analysis by Melbourne Water released in April found a one-in-100-year flood would impact an extra 850 homes across Kensington Banks in 2024, with water levels already forecast up by 0.84 metres.

The report found the wall prolonged the peak of the 2022 flood by up to four-and-a-half hours and would fail to stop the racetrack being inundated if those water levels were repeated now.

It recommended the "efficacy and impact" of the wall, which saw the racecourse protected in 2022 as nearby homes were inundated, be reviewed after new analysis of the Maribyrnong River floodplain by Melbourne Water is released in 2026.

The Victoria Racing Club's only response was that it

Continued on page 2.

TRADER PROFILE, PAGE 03

Ace Antiques:
North
Melbourne's
own treasure
chest

TRANSPORT, PAGE 04

**Council gets
under way
with construc-
tion of Arden
St riding lanes**

ELECTIONS, PAGE 07

**City of Mel-
bourne local
government
elections: where
things are at**

CITY NEWS



LOCAL NEWS, PAGE 11

Local architect's vision to make Royal Park's "Nature Play" accessible

West Melbourne based Folk Architects, led by Tim Wilson (pictured), has proposed re-invisioning Royal Park's "Nature Play" into a more accessible playground for kids of all abilities.

HERITAGE PROPERTY

Sell your home with us and
preserve your property for
future generations

highsideproperty.com.au

0455 503 131

HYPERLOCAL
NEWS

CONTACT

Suite 208, 198 Harbour Esplanade
Docklands 3008
innercitynews.com.au
Tel: 8689 7980

EDITOR
Sean Car

PUBLISHER

Hyperlocal News Pty Ltd
ABN: 57 623 558 725

ADVERTISING

Hyper-local print works for advertisers in our digital world because local people are interested in local news.

To sell to the local community, contact Sean Car on 0460 896 115 or sean@hyperlocalnews.com.au

Reader contributions are welcome. Send letters, articles and images to: georgie@hyperlocalnews.com.au

The deadline for the September edition is September 5

Opinions expressed by contributors are not necessarily shared by the publisher.

hyperlocalnews.com.au
admin@hyperlocalnews.com.au

Follow us on social media by searching @northwestcitynews



Writing's on the wall: Parliamentary Inquiry's final flood report released

Continued from page 1.

The chances of such a flood are projected to triple by 2100 due to the impact of climate change, with floodwaters possibly peaking at more than 1.5 metres higher than in 2022.

The Greens spokesperson for planning Samantha Ratnam said the report was an important first step for the community but warned it "barely scratched the surface".

"There are many unanswered questions, especially for hundreds of residents of Kensington Banks who have been left devastated after learning about the risk of flooding in their neighbourhood with no warning," Ms Ratnam said.

"They need action from this government to support them."

Residents were caught off guard on October 14, 2022, when the Maribyrnong River breached its banks, peaking at 4.216 metres just eight hours after the first major flood alerts were issued.

Kensington Banks locals received no formal flood warning from emergency contact systems.

State Emergency Services and Victoria Police focused preparation efforts on Maribyrnong township upstream, where a lack of volunteers meant only 60 households were doorknocked.

The report praised the "resilience" and willingness of locals to assist neighbours, with many using personal resources to assist with rescues and help clean-up efforts.

Kensington resident Brandon, who asked that his surname not be disclosed, said he believed there would be a significant local interest in the findings of the report.

"Hopefully it's a sign of bigger things to come from the government," he said.

The state government has until January to respond to the report.



A stranded car on Ballarat Rd outside Flemington Racecourse during the October 2022 flood. Photo: Rebecca Shepherd.

Kensington local, City of Melbourne Councillor Rohan Leppert will move a motion on Tuesday, for the City to adopt the position that the state government should manage planning issues arising from the flood report.

The motion also calls for the City to provide residents more information about infrastructure renewal, maintenance and open space flood resilience planning online by September 16. ●



WE GET THE BEST OUT OF OUR BOYS
Be a Simonds Boy

Simonds Catholic College is a small school with big opportunities in the heart of the city. Our teachers are **experts in teaching the way boys learn best**. We are committed to small class sizes to ensure your son will receive the attention he requires to achieve his personal best.

YEAR 7 2025 & 2026 APPLICATIONS OPEN
9321 9200



273 Victoria St, West Melbourne [2 blocks from Queen Vic Market]
www.sccmelb.catholic.edu.au info@sccmelb.catholic.edu.au



With refurbishment works nearly complete for our recently acquired multistorey building, these enhancements will bring us into state-of-the-art facilities in 2024. We invite you to consider Simonds Catholic College for your son. Explore our vibrant community and discover what it truly means to 'be a Simonds boy'.



North and West Melbourne Precinct Association



North Melbourne's treasure chest

“

For the past 22 years, one North Melbourne trader has turned his knack for finding treasure into the area's very own antique paradise.

”

WORDS BY
JON FLEETWOOD



Dave Hauswirth, who is the owner of Ace Antiques located at 555 Queensberry St, North Melbourne, was destined to enter the antiques game, with his father, uncle and grandfather all being collectors.

Some of his earliest memories are of his father and uncle trading collectables and he recalls a time when his uncle bought 250 Singer sewing machines from one person.

Recollections such as these planted a seed in the owner of Ace Antiques, who, after a stint in construction, decided to follow family tradition and opened his first store in Perth.

However, the trader began to see the truth behind Western Australia's reputation as the "wait-awhile" state and after a few quiet years decided to shut shop and relocate to Melbourne because there was more opportunity.

After loading his antiques into a 48-foot boxcar, the then-soon-to-be owner of Ace

Antiques made his way across the Nullarbor to greener pastures, and he hasn't looked back since.

Ace Antiques has become a North Melbourne institution during its 22-year life and the store's owner pins this down to the people and opportunities available in Melbourne.

Trade fairs and swap meets around the city have helped Mr Hauswirth find new customers and treasure-seekers, and he said that there was a bigger second-hand market compared to Perth.

However, it hasn't always been smooth sailing for the North Melbourne trader who told *North West City News* his business "only just kept its head above water" when COVID hit.

He made attempts to turn the business online but to no avail. Luckily for Mr Hauswirth, with the post-pandemic blues behind him and the city open again, his store has reached new heights.



He stocks the largest range of Bakelite radios in Australia, as well as glassware, china, collectable signs, knick-knacks and 100 crates of records.

From original Pink Floyd pressings to the likes of Frank Zappa and Miles Davis, Ace Antiques has something for every listener.

There is also a large collection of enamel signs from petrol pumps, train stations, newsagents, and streets around Australia.

To make some more room for his ever-growing collection of antiques, Mr Hauswirth has taken over the shop next door, which one day will be filled with records and hi-fi collectables such as amplifiers and speakers.

For anyone looking to pick up a new record or surprise collectable, Ace Antiques is North Melbourne's one-stop-shop that is only a short ride on the 57 tram away. ●

Join or renew your North & West Melbourne Precinct Association (NWMPA) membership!

12-months NWMPA membership costs \$60 and will benefit members with:

- Year round precinct marketing and promotional opportunities
- Advocating for the precinct, winning grants and funding to support initiatives
- Assist members in navigating Council, finding the right people and services to solve problems
- Invitations to free networking and professional development
- Listing in the online NWMPA business directory
- NWMPA window decal and precinct tote bags
- Benefit from the precinct gift card initiative

northwestmelbourne.com.au



Victorian Archives Centre features *Reception This Way*



The Victorian Archives Centre in North Melbourne is holding a new exhibition, giving Melburnians the opportunity to take a step back in time and revisit some classic Australian motels.

WORDS BY
JON FLEETWOOD



Reception This Way is a photographic exhibition that visually chronicles the arrival of motels in Australia in the 1950s, paying homage to a new form of accommodation that revolutionised the domestic tourism market.

According to Catriona Donnelly, who is a curator at the National Archives of Australia, it will have you reminiscing about holidays at the beach and the excitement you felt as your breakfast tray was delivered to your room through a little hatch.

"Motels were the height of luxury and sophistication," she said. Combined with the rise of car ownership they gave Australians the freedom to travel at their own pace wherever they liked.

The exhibition opened on July 27 and runs until October 27 at the Victorian Archives Centre, 99 Shiel St, North Melbourne.

Exhibitions such as these are just a taste of what the centre has on offer, according to communications and public programming officer for the Victorian Archives Centre Natasha Cantwell.

The centre, which is open to the public Monday to Friday between 10.30am and 4.30pm, holds records for "important parts" of Australian history.

It is the home of the criminal record, letters, and legal documents of the notorious Australian bushranger Ned Kelly among hundreds of thousands of other historical documents.

The centre holds around 100 kilometres of hard copy records and 600,000 digital records dating from 1836 to the present day, with more records in all formats transferred to the

Public Record Office of Victoria every year. Many records in the collection are open and accessible to researchers either in the centre's reading rooms or online.

In the coming months, Natasha Cantwell is excited about the range of events that will be held at the centre.

On Friday, August 30, award-winning author Hazel Edwards will be hosting a workshop on *Writing a Non-Boring Family Story for a Significant Child*.

Edwards who is the author of beloved picture book series *There's a Hippopotamus on Our Roof Eating Cake* will teach the 25 participants of the workshop skills in researching, interviewing, writing, editing and audience engagement.

Later in the year, historian Dr Yves Rees who is a senior lecturer at La Trobe University will also be speaking at the *Travelling to Tomorrow* event where she will take a deep dive into influential Australian women in the United States between 1910 and 1960.

For anyone wanting to learn more about Australian history, there is no better place to start than the Victorian Archives Centre. ●

Construction of Arden St riding lanes under way

As a part of its riding lane program, the City of Melbourne has begun installing separated lanes in Arden St in North Melbourne.

WORDS BY
JON FLEETWOOD



The start of works in late June comes after the Department of Transport and Planning approved the Arden St design plans earlier this year, with works expected to take around five months to complete.

The new riding lanes will stretch three kilometres from Moonee Ponds Creek to Wreckyn and Chetwynd streets, connecting to the riding lanes on Abbotsford St and the Capital City Trail.

The implementation of the lanes aligns with the Arden Precinct Structure Plan and will provide a safe and sustainable route to Metro Tunnel's new Arden Station, which is set to open in 2025.

In the project Works Notice that was released in June 2024, the City of Melbourne said the lanes would be installed next to the footpath, protected from traffic by kerbs

and parking bays.

Due to this, road lanes will be reduced from two to one in both directions. However, the existing traffic lane layout will remain the same at most intersections.

To provide space for the project, there will be changes to the layout of the parking bays, including the removal of 40 bays. This means that 204 parking spaces will be retained within the three-kilometre stretch.

Following community consultation on the proposed plans in May 2023, a survey that was held via Participate Melbourne revealed that 87 per cent of the 407 respondents supported it.

The key considerations that community members raised were to prioritise safety for cyclists, pedestrians, and drivers, reduce traffic and congestion, make riding accessible for people of varying abilities and reduce emissions and pollution.

However, 22 per cent of community members were concerned by the loss of parking and 18 per cent by the increased traffic congestion.

While the lanes are being constructed, the council said that community members could expect works to take place between 7am and 5pm Monday to Friday, with occasional overnight and weekend work required.

Nearby properties will be notified ahead of the works starting,



pedestrian, car and bike access on Arden St will be maintained at all times and access to driveways will be maintained most of the time.

The council is also looking to begin constructing new bike lanes on Queensberry St during mid- to late-2025.

However, the implementation of these lanes will not begin until appropriate amendments are made in light of the results from the community consultation that ended in August of this year.

In the proposed design, the council plans to reinstate Queensberry St to one traffic lane in each direction and deliver safer and better-connected riding lanes from Peel St to Rathdowne St.

Within this section, traffic lanes will be reduced in both directions and 50 parking bays will be removed to make way for the new protected bike lanes.

The proposed design incorporates a range of design features to ensure cyclists are provided with

the safest possible riding lanes.

They will include protection at intersections, flexible bollards, gaps closed in median islands, concrete separator kerbs and islands, widened footpaths, vehicle hook turn boxes and green surface treatment at selected locations.

There will also be new zebra crossings installed on O'Connell and Berkeley streets, while 57 new trees are proposed to be planted as part of the council's Urban Forest Strategy. ●

ELLEN SANDELL

GREENS STATE MP FOR MELBOURNE

Hi, I'm Ellen, your local state MP.
I'm here to help. Don't hesitate to get in touch.

(03) 9328 4637
office@ellensandell.com

60 Leicester Street
Carlton VIC 3053



Macaulay Amendment C417

On Thursday, August 8 I logged online to listen to an information session by the City of Melbourne's planning team, and "have my say" in framing the proposed planning scheme amendment (Macaulay Amendment C417) to the Melbourne Planning Scheme.

They are planning a further session – in person – in the Kensington Town Hall at 6pm on August 28. The Amendment is out for "exhibition" – and your feedback – until Friday, September 6.

This was familiar material to me since the Kensington Association had participated in the drafting of the Macaulay Structure Plan 2021 (MSP) – yes, that's right – 2021! The MSP had been "sitting on the Minister's desk" for two or three years waiting to go through the Amendment process.

Why the hold up? It must have been in the interest of some party, some stakeholder, some lobby group. Yes, of course it was. It has given the developers an extra two years (at least) to flex their muscles and get development plans approved under the status quo building regulations – Design and Development Overlay 63 (DDO63) – which were more beneficial to them.

On top of that, supercharged by the panicky (and disingenuous) Big Build, the state government has taken a firmer hand on development approvals, sidelining any effective local participation, and giving developers inside running.

One example of this, the giant 447-apartment Greystar development (yet to be commenced at 352-400 Macaulay Rd) received approval in the dying days of Dan Andrews' premiership. It will complete the "Macaulay Canyons" on the north side of Macaulay Rd.

During the August 8 online session, we looked at the new set of building regulations, in particular DDO78, which covers the Stubbs precinct of the MSP. The council planners revealed that contrary to the MSP 2021 the government had dropped the idea of having any mandatory requirement to provide affordable housing in favour of a discretionary provision of six per cent affordable housing. Apparently, the council was unhappy about that, but the state government insisted.

Again, a clear example of the state gov-



ernment overriding local decision making to favour developers. This is happening in the context of MSP 2021, which claims that the City of Melbourne's Affordable Housing Strategy had identified a shortfall of 5500 affordable homes across the municipality, and that affordable housing is essential infrastructure for our city and improves social and economic resilience. Go figure!

A couple of "on the ground" observations around the Stubbs precinct ...

All locals are only too aware of the gigantic Local development on the corner of Stubbs St and Macaulay Rd. In the original plans for this building there was an east-west "walk through", so it was "permeable" to public pedestrians, but that is not the case in the finished product. It seems like a

very urban version of a "gated community", with an internal in-ground swimming pool and super-affordable three-bedroom apartments renting for \$1300-plus per week!

Meanwhile at the western end of the block, spare a thought for the hapless residents in Barnett St who are living through the construction of a similar size Assemble development over their back fences (see picture). I can only imagine what that is like, if only from a noise point of view. The price for residents to pay when a government gives way to the developer lobby. This Assemble development was conceived under DDO63; the August consultations on Amendment C417 are looking at DDO78; I wonder how much difference that will make in future developments.

One very interesting thing to watch out for. Amendment C417 is not likely to be "gazetted" (come into effect) for another 18 months! If this government is true to form, it could be even longer.

So, watch out! While we wait, what developers will flex their muscles to try and sneak in the door and get approval for a development while the more favourable DDO63 is still in effect? ●

Simon Harvey

SPOKESPERSON
INFO@KENSINGTON
ASSOCIATION.ORG



FAMILY LAW

Accredited Family Law Specialist

First Consultation Free

446 William St,
West Melbourne 3003

0409 218 346

mchugh@mchugh-law.com.au
mchugh-law.com.au

Robert A. McHugh LLB, LLM
BARRISTER & SOLICITOR

ACCREDITED FAMILY LAW SPECIALIST



Robert A. McHugh LLB (Melb), LLM (Mon)

CHILD SUPPORT

Are you having problems?

Call us for a free, no obligation consultation

Manby and Scott
Child Support Lawyers

0423 778 728
childsupportlawyers.com.au



Simon Bacon, Managing Partner

MANBY & SCOTT
Child Support Lawyers



“Dispensing justice”: Melbourne lawyers’ tribute to the California Highway Patrol

Whether it be in or out of court, respect for the law is something local lawyers Robert McHugh and Simon Bacon have in common, as personified by their shared appreciation for these stunning Moto Guzzi police bikes.



WORDS BY SEAN CAR



Made famous in California during the 1970s, the cruiser motorcycles became a symbol of the Los Angeles Police Department after Moto Guzzi won the tender for the supply of the vehicles over Harley-Davidson.

Eventually, they became the vehicle of choice for other police departments, including the California Highway Patrol – as immortalised in the television series *CHiPs* between 1977 and 1983.

The story of Moto Guzzi in Californian law enforcement, as told through the highway patrol officers in *CHiPs*, is one which has always resonated with Mr McHugh and Mr Bacon who each own one today.

And while their roles as family and child support lawyers see them uphold the law in a courtroom, their motorcycles serve as a reminder of the sacrifice made by those enforcing it on the streets.

“In *CHiPs*, you had these two guys cruising up and down the byways and highways of California dispensing justice,” Mr McHugh told *North West City News*. “Effectively, you had these two cops arresting villains, stopping murders, arresting bank robbers.”

“They became the police bikes of choice in California after a very brave Chief Commissioner of Police actually cancelled the orders for Harley-Davidson police bikes and employed Moto Guzzi instead.”

“There are very few lawyers who ride motorcycles, but I’ve always loved them – I think they’re fabulous and there are many parallels we like to draw between them and our roles in the justice system!”

While the pair operate separate firms, Mr McHugh under his own name at 446 William St, West Melbourne, and Mr Bacon as managing director of Manby & Scott Child Support Lawyers at Normanby Chambers, 430 Little Collins St, Melbourne, they have formed a partnership built on symbiotic referral of cases and long-standing respect.

Mr McHugh, a senior accredited family law specialist, and Mr Bacon, one of the country’s eminent practitioners in child support law, have nearly 80 years of combined experience representing and supporting families in some of their most challenging times.

For more information: mchugh-law.com.au and childsupportlawyers.com.au ●

North Melbourne residents put a foot down to prevent apartment crime

While apartment crime in Melbourne has risen during the past year, residents of a North Melbourne apartment block have found a way to make their building more secure and significantly reduce the number of break-ins.

WORDS BY JON FLEETWOOD



The chairman of the owners’ corporation (OC) for 150 Peel St, North Melbourne, Sam Nivas told *North West City News* that the OC had recently implemented new security measures that had curbed the frequency of crime within and surrounding the building.

Before the measures were put in place, Mr Nivas had noticed an increase in bike and cage theft within the building’s garage, as well as package and mail theft in the foyer.

In some cases, people broke in with welders to bust open cage locks and take bikes off secured racks.

To prevent this, alarm systems have been installed at the building’s entry, fire exits, and garage door, along with a greater number of security cameras and lights placed around the premises.

Mr Nivas has even started making posters with images of people who have broken into the apartment complex and has noticed a decline in the number of break-ins since the measures have been put in place.

However, he is concerned that other buildings within the area have not adopted the same level of security precautions.

Mr Nivas believes that the people who break into the buildings target so-called “ghost buildings” – apartment complexes that do not have an active committee and therefore do not have the appropriate preventative measures.

According to the Crime Statistics Agency (CSA), there has been an 11.3 per cent increase in crime incidents in the City of Melbourne, and 1543 criminal incidents were reported in 2024 compared to 1302 the year prior in North Melbourne.

“There has been a 17 per cent increase in theft offences recorded in the past 12 months, driven by the highest ever numbers of steal from a retail store offence, as well as sizable increases in steal from a motor vehicle and burglary offences,” CSA chief statistician Fiona Dowsley said.

Ms Dowsley believes that these increases involving the acquisition of property may be related to cost-of-living pressures.

To continue to reduce the risk of crime within North Melbourne, Mr Nivas is in the



early stages of starting a North Melbourne Neighbourhood Watch, and he is calling on community members to reach out if they are interested in joining.

Earlier this year, the manager of administration and members’ services at Neighbourhood Watch Victoria Nikoll Peschek told sibling publication *Southbank News* that Neighbourhood Watch groups were essential in helping educate residents on how to prevent crime.

Metropolitan areas such as North Melbourne, according to Ms Peschek, were predominately made up of apartments and were prone to storage area break-ins, bike theft, car crime and mail theft.

“The number one thing to prevent crime is knowing your neighbour,” she said. “It’s the best way for abnormal behaviour to be detected.”

To help empower people to take proactive steps to prevent crime in their apartments, Neighbourhood Watch Victoria supported by RACV developed a free online quiz.

By taking the “How Safe is My Apartment” quiz, residents will have greater awareness of potential security vulnerabilities and will receive a customised report that will address areas for improvement in their apartment and building. ●

For more information: participate.melbourne.vic.gov.au



Proudly representing the community in inner Melbourne

Evan MULHOLLAND MP

Liberal Member for Northern Metropolitan Region

9651 8242

[EvanMulhollandMP](https://www.facebook.com/EvanMulhollandMP)

Evan.Mulholland@parliament.vic.gov.au

[Shop 24, 55-63 Paringa Boulevard, Meadow Heights](#)

EvanMulholland.com.au

Authorised by Evan Mulholland MP, Shop 24/55-63 Paringa Boulevard, Meadow Heights VIC 3048.

City of Melbourne elections: where things are at

We've learned plenty more during this past month about the makeup of the field competing for Melbourne Town Hall at October's City of Melbourne elections. Here's a snapshot ...

WORDS BY SEAN CAR



Lord Mayor Nicholas Reece and Cr Roshena Campbell



Arron Wood and Erin Deering

The two front runners

Lord Mayor Nicholas Reece wasted little time after being sworn in during July to announce his bid for the city's top job, announcing a campaign underpinned by a pledge to "get good done".

This was followed by announcing Liberal Party member and current councillor Roshena Campbell as his deputy. While the identities of who will be making up the Team Reece councillor ticket remained unconfirmed at the time of publishing, it's understood long-term Cr Kevin Louey will be given the number one spot, meaning a likely fifth consecutive term on council – 20 years to be precise.

As for Cr Reece's main opponent, former Deputy Lord Mayor Arron Wood, who served alongside Reece as a fellow Team Doyle councillor during the 2016 election campaign, also announced his candidacy for Lord Mayor in late July.

And on August 11, Mr Wood announced his running partner as swimwear entrepreneur Erin Deering, who despite being new to politics is understood to have a "unique ability to innovate and lead on a global scale."

Cr Reece's campaign has so far included promises of lighting up Melbourne's laneways, a "Melbourne 3000 board" and free swimming lessons for beginners. Mr Wood meanwhile has sworn to implement a zero per cent rate freeze, cut the cost of annual parking permits and make Melbourne Australia's "Christmas Capital".

The smokey

Announcing his candidacy here in North Melbourne in early August was current independent Cr Jamal Hakim, who has proven to be an impactful contributor during his first term.

Mr Hakim has made a habit of engaging with all corners of the community and he said Team Hakim would "shape a future for Melbourne that prioritises people, not politics", pledging a "democratic, welcoming and flourishing city" on his watch.

While the weight of Melbourne's gerrymander, where businesses are each given two votes to residents' one, will present a challenge for Team Hakim, preferences will prove the key in who ends up in the Lord Mayoral robes.

Given the number of teams expected to make up this year's field, depending how preferences flow (particularly from the

more progressive tickets) don't be shocked if Cr Hakim emerges as a front runner come October.

The rest

The Greens have announced Roxane Ingleton and Marley McRae McLeod as their Lord Mayor and Deputy Lord Mayor candidates, however most of the interest is with who runs in the party's first two councillor positions.

The Greens have historically contributed two councillors to the City of Melbourne, and those will most likely be taken by current Cr Dr Olivia Ball, and newcomer in West Melbourne resident Karl Hessian. Three-term councillor and Kensington resident Rohan Leppert won't be recontesting in October.

The Labor Party also announced its ticket in Kensington on August 10, headed up again by Lord Mayor candidate and East Melbourne resident Phil Reed. But again, expect Cr Davydd Griffiths to be returned to council at the number one spot on the councillor ticket.

While the Greens have notoriously been the kingmakers at recent City of Melbourne elections, it will be interesting to see who Labor chooses to preference after Cr Nicholas Reece (a Labor member running as an independent) selected Liberal Cr Roshena Campbell as his running mate.

More interestingly, the Liberal Party is endorsing a City of Melbourne council team

for the first time ever, and its understood East Melbourne resident and former federal candidate for Macnamara Owen Guest will fill the number one councillor spot.

That leaves pollster Gary Morgan, who has run for Lord Mayor at the past several elections and is largely there to try and get a councillor elected and provide preferences to his preferred Lord Mayoral candidate. Last time around, that was Sally Capp.

As always, there have also been discussions swirling around about a resident-led ticket, and former Carlton football great Anthony Koutafides is understood to be making a run for Lord Mayor.

As for the remaining councillors who haven't declared their intentions publicly, Cr Phil Le Liu has been rumoured to be running on Arron Wood's ticket, while Cr Elizabeth Doidge earned her place in 2020 on a predominantly CFMEU-backed ticket. For obvious reasons, it appears her return to council would seem unlikely.

That leaves Cr Jason Chang, who earned his spot on Arron Wood's 2020 ticket, and has been a part-time contributor on council due to the constraints of running his business Calia, which went into receivership earlier this year. All signs point to no return for the one-term councillor.

As per previous elections, Hyperlocal News (publisher of North West City News) will host a donations register on its website inviting all candidates to declare their donations during the campaign. ●

Government goes out to tender for Arden

The state government is currently seeking expressions of interest from developers to help deliver urban renewal in the Arden Precinct – a move which has drawn concern from right across the community.

WORDS BY SEAN CAR



In June, Development Victoria released tender documents for around 13 hectares of government-owned land in Arden, which is expected to be awarded to a single private developer.

"This EOI is the first phase of a multi-staged market process to identify a short-list of bidders who will be invited to participate in a subsequent request for proposal process," the government's website read.

"This process offers an exceptional opportunity for industry to demonstrate leadership in urban renewal and contribute to supporting population growth and the future of Victoria's economy."

With all signs indicating the land will go to one major developer, many, including Lord Mayor Nicholas Reece, have since expressed concerns that Arden could be destined for the same fate as neighbouring Docklands.

Development Victoria is still the responsible authority for urban renewal in Docklands, which has been redeveloped under a series of opaque development plans with a handful of major developers since the late '90s.

Docklands has long been criticised for its "development first" approach to urban renewal, with critical community infrastructure, including a new primary school, being prioritised last.

While the tender represents a significant step in Arden's renewal, the state government has come under fire from the local community and the City of Melbourne for its handling of the North Melbourne urban renewal project.

Just two kilometres from Melbourne's CBD, the government expects 34,000 jobs and around 20,000 living in Arden by 2051, but to date, there are still no employment plans or affordable housing targets for the precinct.

Last year, the government also scrapped \$5-\$6 billion plans announced in 2022 for a new hospital in Arden, and the community has been ramping up pressure on the government to allocate sites for badly needed schools.

While Arden will be home to its own Metro Station when it opens next year, Cr Rohan Leppert said this year that it would be opening "in the middle of a vast empty site: a potent symbol of a missed opportunity." ●

EzyMart

EzyMart stores bring community convenience 365 days a year, 7 days a week.

Discover endless convenience and variety at EzyMart, your one-stop shop for all your needs!

395 Swanston Street, Melbourne

EzyMart

ezymart.net.au

Supporting business

Design & Construction

CYP-BS00422



A LOOK AT OUR NEIGHBOURHOOD

MIRACLES CREATED THROUGH COMMUNITY GRANTS

Get support to host events that create community connection

When Rozilah Kamarudin applied for a City of Melbourne grant to hold a series of workshops for young people, she was spurred by a desire to help them reach their potential.

Her idea was to use crafting flower fairies as an ice breaker so people could focus on new possibilities. Rozilah said the practice can help young people manifest what they want to be themselves. An engineer by trade, Rozilah is also a certified coach, supporting people to follow their goals.

"In solutions-focused coaching, the 'miracle question' is key. It's important for people to be able to see the possibility of a miracle and the power of visioning. That's how the flower fairies workshop came about," she said.



A grant helped Rozilah run a community craft workshop

"City of Melbourne has been very kind and supportive to me. I moved to Australia from Malaysia in 2022 without any network but City of Melbourne helped me to apply for a Connected Neighbourhoods Small Grant so I could use my skills to help others."

"I was expecting only 10 people for each of the fairy-making workshops, but it booked up really fast and I had 20 per session."

The grant Rozilah received covered the cost of materials for participants, as well as promotion of the workshops.

GOT AN IDEA? GET A GRANT TO SUPPORT IT

Get support to host events and projects that create community connection and benefit the people in your neighbourhood.

City of Melbourne offers grants to people, community organisations and businesses in the arts, community, recreation, events and business sectors. We encourage applications that reflect creativity and are inclusive and sustainable.

These grants help our community to deliver quality programs,

both large-scale and community-focused events, and services which benefit Melbourne and its people.

They should also bring environmental, social and economic benefits to the city. Each year, City of Melbourne offers \$12 million in grants for the community. Have a look at how we can support you.

COMMUNITY INCLUSION GRANTS

Do you have an idea that empowers your community to identify and respond to issues? Or one that will increase community connection and belonging?

Apply for a **Community Inclusion Grant** and support your community through access and participation, while promoting equity, diversity and inclusion.

These grants are available to not-for-profit organisations and schools to work in partnership with the City of Melbourne.

Grants available: \$1000 to \$20,000 **Applications close:** Monday 12 August

SOCIAL INVESTMENT PARTNERSHIPS GRANTS

Do you have a project which addresses affordable housing or human rights? What about loneliness or community safety?

The **Social Investment Partnerships Grants** support you to partner with City of Melbourne to address social issues. The program promotes projects that enable equitable opportunities and help our diverse neighbourhoods to thrive.

The grants support people to be part of social, cultural, economic and civic life, and contribute to a sustainable, equitable and resilient city. Available to not-for-profit organisations, social enterprises and B Corporations.

Grants available: \$25,000 to \$80,000 each year, for two years **Applications open:** Tuesday 1 October

CONNECTED NEIGHBOURHOODS SMALL GRANTS

Creating connected and inclusive communities in our neighbourhoods is a priority. We provide small grants to support residents and organisations to address local issues and neighbourhood priorities.

These grants empower people to influence change in communities within their own neighbourhoods. Projects should support people to take part and connect, as well as equity, diversity and inclusion.

Applicants can be a not-for-profit constituted organisation, school, community leader, or an individual.

Grants available: Up to \$2000 **Applications open:** Year-round

Discover your Neighbourhood Portal



Access community grants, and find local news and events in Kensington, North and West Melbourne at participate.melbourne.vic.gov.au/neighbourhoods



Find out more information about all City of Melbourne grants at melbourne.vic.gov.au/grantsandsponsorships



HELP SHAPE THE FUTURE OF MELBOURNE

Nominate as a candidate for the Melbourne City Council election in October

Do you have ideas for the future of Melbourne? Are you passionate about making a positive contribution to your community and want to make a difference? Now is the time to put your hand up and stand to represent your community as an elected councillor.

We encourage people from all backgrounds and experiences who reflect the rich diversity of the City of Melbourne community to nominate to run as a candidate in the next elections in October.

Register for one of the free information sessions to learn more about the role and responsibilities of the Lord Mayor, Deputy Lord Mayor and Councillors.

MUNICIPAL ASSOCIATION OF VICTORIA STAND FOR COUNCIL INFORMATION SESSION

Date: Wednesday 31 July
Time: 6.30-8.30pm
Where: St Kilda Town Hall Auditorium, 99A Carlisle Street, St Kilda

CITY OF MELBOURNE RESIDENT-ONLY INFORMATION SESSION

Date: Thursday 15 August
Time: 6-8pm
Where: Melbourne Town Hall, Swanston Room, 90-130 Swanston Street, Melbourne

For more information, visit mav.asn.au/stand-for-council-2024

To be a candidate for either election, please ensure you are enrolled to vote within the City of Melbourne by Tuesday 6 August.

To find out more, visit elections.melbourne.vic.gov.au/standing-as-a-candidate



Learn about the role of councillors at an information session



Have your say on our tree-planting plans

URBAN FOREST PRECINCT PLAN

Last year we asked you for your input to help us create tree planting plans for our city.

The drafts of the new Urban Forest Precinct Plans for Carlton, CBD, East Melbourne and South Yarra are available for public comment.

This is an opportunity for community members to influence tree planting in their neighbourhood for the next 10 years.

Share your feedback at participate.melbourne.vic.gov.au/urban-forest

IN BRIEF

COUNCIL ELECTION

Melbourne City Council elections will be held by postal ballot in October. If you have enrolled, you will receive a ballot pack, and you have until 6pm on 25 October to post back your completed ballot pack. Councils play a major role in delivering services to residents and businesses. Your vote makes a difference. For more information, visit elections.melbourne.vic.gov.au

MAKE IT A MARKET DAY

We're restoring the iconic Queen Victoria Market and adding modern facilities to make the market work better for traders, customers and visitors. With lots of work underway, plan ahead and consider catching the tram, train, bike or scooter to get to and from the market. Your favourite market stalls are still open for business. Learn more at melbourne.vic.gov.au/qvmrenewal

NOW OR NEVER RETURNS

Our newest festival – Now or Never – is back after an incredible debut last year. From 22 to 31 August, check out a program of groundbreaking music and audio-visual performances, immersive art installations, provocative talks, spectacular technology and much more. Book your tickets at nowornever.melbourne.vic.gov.au

CREATING A MORE LIVEABLE 24-HOUR CITY

Have your say on our Municipal Planning Strategy and help set a long-term vision and strategy for the growth and development of our city. Visit participate.melbourne.vic.gov.au/amendment-c432 to have your say until 16 September.

BUDGET ENDORSED

Our Budget 2024-25 and the Annual Plan 2024-25 were adopted by Council on 25 June. Our \$781 million Budget will help us deliver essential services for our community. Read more at participate.melbourne.vic.gov.au/our-plans-2024-25

AMENDMENT C417 MACAULAY

New planning controls are being proposed for parts of Kensington and North Melbourne. Find out more and have your say at participate.melbourne.vic.gov.au/amendment-c417

KEEP IN TOUCH

To stay connected with all the latest news from the City of Melbourne, follow us on social media and subscribe to *Melbourne News* at news.melbourne.vic.gov.au

Connect with us

[/cityofmelbourne](https://www.facebook.com/cityofmelbourne)
[@cityofmelbourne](https://www.instagram.com/cityofmelbourne)
[@cityofmelbourne](https://www.x.com/cityofmelbourne)



CITY OF MELBOURNE

New e-scooter regulations not enough to curb residents' safety concerns

Local residents' groups have called on the City of Melbourne to consult the public before it proceeds with a further rollout of commercial e-scooters following Melbourne's two-year trial.

WORDS BY
SABRINA CAIRES



The Victorian Government announced in July that it would introduce tougher regulations around e-scooters to improve safety.

The measures will come into effect in October and will include increased fines for riding on the footpath, drinking while riding, not wearing a helmet and underage riding.

The changes will also see new offences introduced for riding as a passenger and not wearing a helmet as a passenger.

The regulations followed the government's announcement that it will allow for the use of e-scooters state-wide after a successful two-year trial, which will end on October 4.

In 2022, former Lord Mayor Sally Capp said the trial was "one of the most successful in the world," reaching one million trips in just four months compared to London which took a year to meet the same milestone.

Since then, e-scooters have soared in popularity across Melbourne.

Lord Mayor Nicholas Reece said in July that more than nine million trips had been taken over the course of the trial so far.

Cr Reece said that almost a third of these trips were in place of car trips.

But president of EastEnders residents' group Dr Stan Capp said the popularity of commercial e-scooters needed to be weighed

against the impact on community safety.

"As a resident group in the east of the CBD, EastEnders has discussed this consistently throughout the trial with an overwhelming number of members having experienced a heightened degree of anxiety about the activities of e-scooter riders and the threats to personal safety," Dr Capp said.

A recent EastEnders meeting heard a majority agreement that commercial e-scooters should be banned.

Research published last year in the ANZ *Journal of Surgery* found that between January 2022 and January 2023, 256 people presented to the Royal Melbourne Hospital with e-scooter related injuries.

The vast majority of those who were injured were riders, with nine of the patients being pedestrians.

More than a third of patients had been drinking alcohol, and only a third were wearing a helmet. The cost of these injuries to the hospital was more than \$1.9 million.

Minister for Public and Active Transport Gabrielle Williams said e-scooters were here to stay.

"We know there have been safety concerns, and that's why we have thoroughly assessed their use and are introducing some of the toughest new laws in the country to make e-scooters safer," Minister Williams said.

"They've proven popular among commuters, especially shift workers, providing an additional option to travel home safely."

The government says that councils were working with the Department of Transport and Planning to instate further safety measures including footpath detection.

According to AAP, Neuron Mobility said in July that it would install AI cameras on all Melbourne e-scooters.

The AI technology has been training for six months to recognise Melbourne's footpaths and roads. Neuron said the technology had the ability to detect when the user was on a footpath in less than a second, after which an audio warning was issued.

The power on the e-scooter may then be reduced, and repeat offenders face potentially being banned.

Dr Capp said that before the City of Melbourne proceeds with the official rollout within the municipality, it should consult the community through either a People's Panel, polling done through a credible public opinion research company, or a plebiscite of all City of Melbourne residents and ratepayers.

"The resolution of 'wicked problems' is at the heart of deliberative democracy and the use or elimination of commercial e-scooters in the City of Melbourne is a 'wicked' problem," Dr Capp said.

"The City of Melbourne has the option not to go to procurement."

The East Melbourne Group and Carlton Residents' Association also supported a deliberative process to assess the efficacy of rental e-scooter services.

Rafa Camillo, president of Residents 3000, said that while the group welcomed the new regulations for the remainder of

the trial, he did not support commercial e-scooters in the long term.

"The trial with commercial e-scooters must be ceased and only private e-scooters be allowed to be used in postcode 3000. The reason for my firm and direct opinion is based on this long trial, and my conclusion is that the commercial e-scooters in the CBD can cause more harm than good," Mr Camillo said.

"As president of Residents 3000 group, I get constant complaints on the commercial e-scooters users and the accidents that they cause."

"The e-scooters are abandoned everywhere causing a massive impact on pedestrian mobility and those that have vision impairment."

He added that at a Town Hall meeting between presidents of residents' groups on August 1, it was unanimously agreed that the operation of commercial e-scooters across Melbourne should be stopped.

Cr Reece said in a statement on Facebook that the City of Melbourne would consider further e-scooter measures in August.

"If operators and riders can't abide by our rules, shared e-scooters won't be permitted in the City of Melbourne," the Lord Mayor said.

At the Future Melbourne Committee (FMC) meeting on August 13, which took place shortly after publishing, councillors were expected to vote on a report from council management which recommended deferring any longer-term procurement arrangements with operators until the effectiveness of the additional safety measures announced by the state government had been tested.

However, it was reported in the lead-up to the event that the Lord Mayor and Cr Davydd Griffiths were planning to move an alternative motion that would see share hire e-scooters banned from the municipality all together. If supported, it would likely mean Lime and Neuron would be given 30 days notice of their contracts' cancellation. ●



North West City News tours the West Gate Tunnel Project

A busload of curious locals set out for a behind the scenes tour of the West Gate Tunnel Project on Saturday, July 27, as part of the Open House Melbourne weekend.

WORDS BY
REBECCA SHEPHERD



After exploring the project's Info Centre in Yarraville, and queueing up for a complimentary coffee, visitors filed on to a bus and departed for a guided tour of the project's east zone, travelling along the Maribyrnong River, up Footscray Rd and into Docklands.

A project engineer explained the different kinds of infrastructure that was being built, including some of the largest steel girder bridges in Australia, and the 2.5-kilo-

metre veloway – a bright green elevated cycling highway that will run from Footscray to Docklands.

The veloway is currently being lifted into place in segments and suspended underneath a new motorway that runs above Footscray Rd. The veloway is made up of about 195 segments, 40 of which have now been installed.

Also taking shape is the new pedestrian and cycling bridge, which will replace a busy crossing that connects cyclists travelling through Docklands to the Moonee Ponds Creek trail.

Visitors asked about the timeline of the project, the various road and tunnel connections and future journeys that drivers and cyclists will take.

The West Gate Tunnel Project began construction in 2018, and the tunnel and new lanes on the West Gate Freeway, Footscray Rd and Wurundjeri Way will open to traffic in late 2025. ●

STATE MP (UPPER HOUSE)

Labor turns a blind eye to union corruption

I am sure that most Victorians have been shocked by revelations in the past few weeks about widespread corruption, misconduct, and thuggish behaviour on construction sites around Victoria.

WORDS BY
EVAN MULHOLLAND



Premier Jacinta Allan cannot claim to be one of them. It has been proven that the now Premier, along with Labor Prime Minister Anthony Albanese, were sent detailed evidence from an Indigenous labour hire firm of violence and black-banning by CFMEU officials.

Last year, the Opposition referred this conduct to the Independent Broad-based Anti-Corruption Commission (IBAC).

It is a fact that 10 years ago, Labor politicians here in Victoria were aware of the CFMEU's record of blackmail, coercion, and boycotts.

But for the almost decade that Labor have been in power, they have continued to accept the CFMEU's money, allow them to donate and dominate the Victorian Labor Party, and turned a blind eye as they turned Labor's so called "Big Build" into a union- and gangster-led "Big Rort".

The CFMEU is one of the largest donors to the Victorian Labor Party and directly influences Labor Party policy, pre-selections, and internal party appointments.

They have turned a blind eye to this corruption to benefit themselves and to look after their mates. They have allowed billions of Victorian taxpayers' dollars to be

ported, misspent, and wasted.

This is a test of leadership for Jacinta Allan and the test is simple: What did the Premier know, and when did she know it?

Until Jacinta Allan comes clean on these basic questions, Victorians cannot have faith in her government's ability – or willingness – to clean up the rampant corruption that has flourished on her watch.

In contrast, the Victorian Liberals and Nationals have a plan to clean up the rorts in our construction industry.

We are demanding that Labor put the interests of our state before themselves and establish a Royal Commission into CFMEU misconduct on Victorian Government projects.

As we have seen, Labor and the CFMEU are one and the same and they cannot be trusted to investigate themselves.

Only a truly independent Royal Commission can shine a light on that which Labor has sought to cover up and ensure that this shocking corruption is never able to happen again. To further ensure this, a future Liberal and Nationals Government will establish an independent watchdog, Construction Enforcement Victoria, to enforce a Code of Practice for the building and construction industry.

The union corruption which has been laid bare in the past two weeks and covered up by Jacinta Allan and Labor has shown that we need a tough cop on the beat.

The Code will ensure workers can join the union of their choice, and will cover standards of conduct on site, fitness for work, content of enterprise agreements, prevention of collusive practices, and other prohibited conduct.

Only then can we ensure that this rampant corruption and union misconduct never happens again.

Victorians deserve better. ●

Concept proposed to make Royal Park's "Nature Play" playground more accessible

The idea was presented by the team at local business Folk Architects at the *IRREGULAR* festival in May, which was led by the North and West Melbourne Precinct Association.

WORDS BY
SABRINA CAIRES



As part of Melbourne Design Week, *IRREGULAR* saw people who live, work, and play in North and West Melbourne present their visions for improving local public spaces.

When Folk Architects were invited to participate in the festival, it proposed a re-envisioning of the Royal Park "Nature Play" playground to make it more accessible for people of all abilities.

"As a practice, we have a particular interest in inclusive design and advocating for a built environment that accommodates everyone," Tim Wilson, director of Folk Architects, told *North West City News*.

Mr Wilson said that his personal experience of having a daughter with cerebral palsy opened his eyes to the built environment, making him think more deeply about the ways that public spaces could be made more accessible.

"As an architect, we're always thinking about how we can improve people's daily lives through design and architecture," Mr Wilson said.

"I think that certainly now, having personal experience with disability and seeing lots of room for improvement, it's become a bit of a mission for us as a practice to try and advocate for building an environment that



accommodates everyone. That was the key motivation behind it."

The "Nature Play" playground, which is situated near the Royal Children's Hospital, uses natural materials and landscaping to create a space for kids to simultaneously play and engage with nature. It currently features rope ladders, slides, sandpits, swings, a water play area and sculptures to play on.

The proposal envisions new features such as an accessible flying fox with a harness seat, and adding cocoon-like sensory spaces to the pre-existing sculptures.

Mr Wilson said that these spaces can provide a sense of enclosure within the play space, and provide a calming environment for people with neurodiverse needs to retreat from active play and self-regulate.

Other features proposed in the concept include inground trampolines as well as a

Changing Places toilet facility. These kinds of toilets are larger than standard accessible toilets and include automated change tables and hoists. Such facilities open more spaces to individuals with limited mobility.

Since presenting these ideas at *IRREGULAR*, the City of Melbourne and the Department of Neurodevelopment and Disability at the Royal Children's Hospital have both expressed interest in the project.

"We're very much at this point open to expanding upon it and partnering with others who are experts in the space," Mr Wilson said.

"Particularly when you have families that are spending lots of time in the hospital, it's important to have those transitional spaces where you can come out and feel like you're engaging with nature in the play space, but also have some shelter as well." ●

Tree planting begins in Kensington

WORDS BY
REBECCA SHEPHERD



The City of Melbourne began tree planting works in four streets in Kensington in August, as part of the Kensington Urban Forest Precinct Plan 2014-2024.

Up to 93 trees will be planted, and will include Jacaranda, Liquidambar, Black Tupelo and Sawtooth Oak.

The proposed landscape plans, which were shared as part of the community consultation process in March this year, included Gordon Crescent, and McConnell, Coote, McMeikan, Wight and Hopetoun streets. These streets were listed in the original Precinct Plan as being prioritised for planting in years five to seven of the plan (2018 – 2020).

The plans for Gordon Crescent and Hopetoun St have been put on hold for the 2024 planting season in response to community feedback.

Community consultation on the proposed plantings ran throughout March this year, with letters sent to residents on the affected streets, and two pop-up sessions were hosted at the nearby Kensington Neighbourhood Centre. An online survey, asking for feedback on the tree planting proposal, received 147 submissions.

The City of Melbourne reported that most respondents showed enthusiasm for the project, acknowledging the benefits that trees bring to the streets, such as shade, cooling, and visual amenity, while some expressed concerns about leaf litter and the reduction in parking spaces in the affected streets.

Across McConnell, Coote, McMeikan and Wight streets, an estimated 21 parking spaces will be removed.

The trees planted as part of this project count towards the City of Melbourne's annual target of planting 3000 trees across the municipality. ●

Bedford Pocket Park nears completion

North Melbourne is one step closer to having more green space as the Bedford Pocket Park approaches completion.

WORDS BY
JON FLEETWOOD



Construction for the project began in April 2024 and is expected to be completed later this year or early 2025.

Lord Mayor Nicholas Reece is pleased with the progress of the park and said that it was "wonderful" to watch the City of Melbourne successfully deliver this "fantastic" new green space.

The new park will provide North Melbourne residents with an additional 1500 square metres of open space and will feature native plantings, trees, lawn areas, park furniture, a barbecue, play equipment and a ping-pong table.

The Lord Mayor is confident that the park will be "very popular with the locals" after its design underwent two rounds of community consultation before it was endorsed by the City of Melbourne in November 2022.

Throughout the consultation process, it was revealed through a survey that 90 per cent of 134 respondents supported the proposal due to increasing greening and biodiversity and providing new recreational opportunities.

In a report tabled at the November 22 Future Melbourne Committee meeting, the council said that some people were concerned about loss of parking, vehicle access and road congestion.



However, others advocated for pedestrians and cyclists to be prioritised over cars through more cycle infrastructure, fewer carparks, and additional traffic calming measures.

"As we near completion, it's looking fantastic and I'm very confident that this is a green space the local community is going to embrace and love," Cr Reece said.

The new greenspace for North Melbourne is a part of the Suburban Parks program, which has seen the state government partner with local government to invest \$35 million towards delivering 29 pocket parks across Melbourne.

The pocket parks are a mix of new and existing parks and reserves that have been underutilised.

These projects aim to combat Melbourne's increasingly hotter summers and are designed in a way that increases shade and cools local streets. ●

Pet's Corner



Billie's big move

This timid pup has just made the big move from Darwin to North Melbourne.

WORDS BY
SABRINA CAIRES

North Melbourne local Ben adopted Billie four years ago. They've been settling into the neighbourhood for the past few weeks after Ben moved to Melbourne for work.

"She's super shy," Ben told *North West City News*. "She's a rescue from the Top End. I don't know what her background was before

I got her, but she's always been quite timid."

Ben says that while Billie is shy with new people and can get unsettled in new places, she loves meeting other dogs.

You'll find Billie enjoying long walks around Royal Park and bounding around at the native grass circle. "She loves being chased by other dogs."

At home, Billie has a penchant for a certain sweet treat. "I like to think her favourite treat is jellybeans ... she loves stealing them off me." ●



A history of the City of Melbourne Bowls Club

More than 150 years of history is recorded in the newly launched book *On Flagstaff Hill – A History of the City of Melbourne Bowls Club* by historian Alex McDermott.

WORDS BY FELICITY JACK

The date of the launch, August 3, was chosen to celebrate the birthday of Kevin Mansbridge, who first joined the Club in 1974.

He was Club Champion on four occasions between 1982 and 2002 and was made a life member in 1985 in recognition of the work he had done, and continued to do, to support the Club.

Unfortunately, Kevin died earlier this year however members of his family attended the launch.

The first bowls club met in 1866 at the Sabloniere Hotel on the corner of A'Beckett and Queen streets. It moved the following year to more spacious premises on government land in William St.

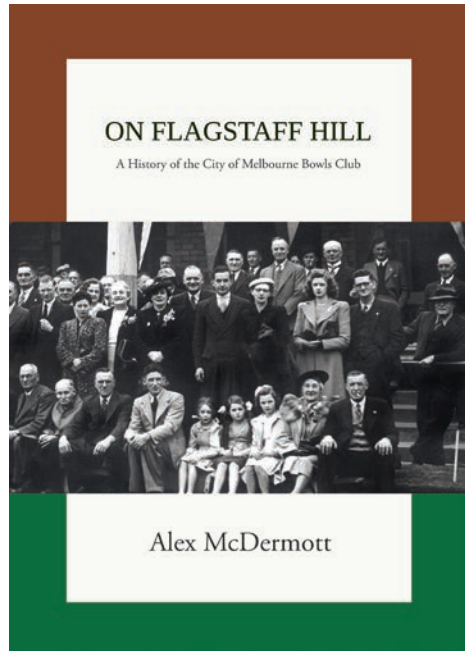
Its original name, the West Melbourne Bowls Club, was changed to City Bowling Club in 1906 and to City of Melbourne Bowls Club in 1966.

The government ordered the club to vacate its William St site as it was required for another purpose.

Their request for land in the Flagstaff Gardens was initially refused, but after some political shenanigans involving crucial support for premier Graham Berry's government at a West Melbourne by-election in 1878, the club was rewarded with a lease provided at a peppercorn rent. It's been occupying this site ever since.

The clubhouse burnt down twice. On May 25, 1938 the wooden structure built 50 years previously was almost totally destroyed. This was quickly replaced by a brick structure but this was substantially destroyed on January 7, 1994.

The new, and current, clubhouse, wasn't completed until 2009. The cost, and the increasingly stringent regulation of clubs, meant that the club had to be managed on a more commercial basis, and the modern building did not



provide the degree of comfort and informality that many of the older club members were accustomed to.

Mystery, political manoeuvres, business versus social interests, loyalty versus self-interest, and the rights of women – these all have a place in this interesting and sometimes fascinating tale that recounts the club's story against the wider political, economic and social backdrop to its history.

One mystery that is unlikely to be solved: why was treasurer, later president, J. H. Polglase, not only ejected from the club but all reference to him expunged from the honour boards, with the name of the vice-president replacing his?

Polglase was lauded at the 1925 AGM but all trace of him had vanished from the records by the 1926 AGM. There is no reference to how he came to be so disgraced.

A vote to allow women to join the club in 1906 was unsuccessful. It took just over 60 years for women to be admitted to the club in 1967.

The book, produced by the club in cooperation with the Hotham History Project, has a number of images, including line drawings by Bernard Caleo.

It is available from the City of Melbourne Bowls Club: citybowls.org at the price of \$35. ●



Taking it to the streets

On the streets in cities across the globe, residents are working with governments to jointly shape their streets in efforts to regenerate their cities.

Streets are the corridors and open spaces in growing cities where density and apartment living is increasing. Streets are viewed as a place to provide connection.

They are thoroughfares of our lives and have the opportunity to reflect the uniqueness of those who live on them and provide for their needs. Streets can help meet the increased demand for amenities, gardens, green spaces, biodiversity, and food security.

There are growing examples of how collaboration between citizens, governments and business are shaping streets.

Professor Dan Hill, at Melbourne School of Design, is shifting the system in Sweden's streets, with a goal to ensure that every street in Sweden is healthy, sustainable, and full of life by 2030.

Urban Rewilding and Transition Streets groups globally have been encouraging people to join together and make streets more sustainable.

In a pioneering move, local neighbours in Kensington, working with Regen Melbourne are creating a joint vision to collaborate with City of Melbourne for Eastwood St.

Cities understand that they need to transform to ensure they meet and adapt to the future demands of the wider environment, the wellbeing of the people who inhabit them and the non-human occupants.

Melbourne, even though voted most livable city for years and despite its many strengths is facing multiple social and environmental challenges – the impact of the

damage to our environment with resulting heat, COVID impacts, the inequality that is increasing, the homelessness, mental anguish, loneliness, food and job insecurity.

These are the result of the various systems that we have set up. With mounting research evidencing that these systems are failing/outdated/no longer appropriate and do not serve the majority of life forms.

Systems change is required, new metrics and measurements need to be determined by all of us. Regeneration is a word we are hearing more and more as we turn to the task of how do we repair and mend the various ailments of our planet and our people.

Humanity is always finding better ways to do things as we adapt to the changes resulting from our behaviour. What is in our control and what is not in our control are questions we can ask ourselves when pondering how to regenerate.

Collaboration is key – Regen Melbourne is driving the move to bring together individuals, various government, academics, and scientists to start asking the questions of the how. Much thinking, money and time has already been spent in analysing and identifying the why.

On its website Regen Melbourne states "we need radically ambitious and tangible projects that chart a collective course to a regenerative and resilient future."

If you are inspired to create a vision for your street contact Regen Melbourne hello@regen.melbourne ●

Jacqui van Heerden

CO-CONVENER OF TRANSITION TOWN KENSINGTON

JACQUIVANHEERDEN@GMAIL.COM



METRO TUNNEL

Pushing the Metro Tunnel to its limit

Test trains have run through the Metro Tunnel for the first time carrying the weight of a full passenger load – but without a passenger in sight.

Instead, the test team piled two trains up with water tanks to carry the equivalent weight of a full passenger load.

The two seven-carriage trains each carried 42 1000-litre water tanks and thousands of water bottles – nearly 135 tonnes of water or about 19,200 kilograms per carriage – during this critical phase of testing.

The team then monitored how trains performed under the pressure of a full load in the twin nine-kilometre tunnels over two weeks.

Testing will continue in the Metro Tunnel – the biggest upgrade of Melbourne's train network in 40 years - into the second half of 2024.

In the coming months the test team will push the project's systems and technology to their limits to ensure the tunnels and five new underground stations

are ready to open to passengers in 2025.

Test trains have already run nearly 20,000km since first entering the tunnels almost a year ago. But trains still have further to go with another 150,000 kilometres to be travelled during testing before opening.

The project's 300 Victorian-first platform screen doors will be opened and closed at least another 30,000 times during this phase, making sure they are working seamlessly in tandem with the doors of Melbourne's modern High-Capacity Metro Trains.

Trial operations will start next – running practice services with drivers and station staff in a dress rehearsal to ensure everything is ready for a safe and reliable opening for passengers.

Major construction has finished on Arden and Parkville stations, with Anzac Station next to be completed and progress continuing on the two CBD stations – Town Hall and State Library.

The Metro Tunnel is the biggest upgrade to Victoria's rail network since the City Loop opened in 1981.

It will free up space in the City Loop, creating a new end-to-end rail line from Sunbury in the north-west to Cranbourne and Pakenham in the south-east – via a new tunnel under the city. ●



QUESTION:

What's your favourite winter beverage?

FACES OF NORTH WEST CITY



Sibó
A chai latte. I like it with the cinnamon spice on the top. It soothes me during the winter.



Emil
Red Ginger (*Jahe Merah*). It's an Indonesian instant sachet ginger drink. It's got this spicy feel to it, I love it.



Sharon
A hot cup of Lady Grey tea. It's got these very nice orange flavours through it.



PARKVILLE GARDENS RESIDENTS' ASSOCIATION

Surprise changes: Parkville Gardens pushes for its own meeting place

“

Surprises can be welcome or unwelcome. Parkville Gardens has had one of each in recent weeks.

”

First, the good news ...

Out of the blue Public Transport Victoria (PTV) announced a major upgrade of the 505 bus service between Moonee Ponds and Melbourne University, effective as of July 14. Did they choose Bastille Day in view of the Olympic Games in Paris? Who knows ...

Weekday services now run every 20 minutes instead of what often used to be once an hour. At the weekend buses are on a half-hour timetable.

That's a terrific improvement, over and above what our former local member Tim Read achieved a few years ago.

Thank you, PTV.

There's also a change of terminus at the university end. Now that Grattan St has been reopened, the terminus has returned to its earlier site just around the corner from Royal Parade.

Locals, please take advantage of this new timetable and patronise the service as much as possible.

The unwelcome surprise was that our good friend Carlo at the Reggio Calabria Club has had to make the tough decision to close his week-night bistro.

No doubt it's disappointing for him, but it's also thrown into disarray our plans to have the Association's AGM and community Quiz Night and dinner there this month.

It's highlighted the fact that Parkville Gardens continues to have no indoor venue at all for community events. We will continue to advocate with the new council for a site of our own, once elections are held in October.

As a result, we have had to engage in some fancy logistical footwork. We will pro-

ceed with the AGM but postpone the Quiz Night and Dinner until a more favourable time.

Plan B is for us to hold the AGM at 7pm on the night of Monday, September 9 at the revamped Western Pavilion in Royal Park.

The venue is a new one for us – it's on the south side of Park St not far from the Upfield line crossing. It's simple and easy to get to and there's plenty of parking. We hope to find a way of assisting those without transport to get there and back.

Keep an eye out for more publicity on Facebook, on our two noticeboards, and via a flyer in your letterbox.

We aim to make it a convivial night. We'll deal with the formalities of the AGM as briefly as possible while making sure there's ample opportunity for everyone to speak up and share their ideas, concerns and hopes for an even better neighbourhood.

The rest of the evening will be for informal mixing around, meeting up and enjoying each other's company over tasty snacks.

Please come along and make the night a

great success. Put 7pm at the Western Pavilion on Monday, September 9 in your calendar now.

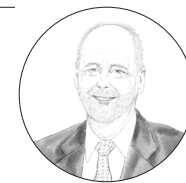
One last appeal ...

Between now and then, consider putting up your hand to join the committee, especially if you are young and energetic and full of ideas. We meet for an hour once a month except in January and also help to stage our events. An injection of new blood would do us all the world of good.

If you'd like to know more, contact me at president@pgra.org.au or our secretary-treasurer Faye Ryan at secretary@pgra.org.au. We'll be happy to chat! •

Tom Knowles

PRESIDENT
[PRESIDENT@PGRA.ORG.AU](mailto:president@pgra.org.au)



Help University of Melbourne researchers explore Melbourne residents' transport experiences, beliefs, and policy preferences.

Our research explores the psychological processes that may explain the similarities and differences among Melbourne transport users in terms of their policy preferences, desired futures, and advocacy behaviours.

Participate in our online survey.

The survey takes about 20 minutes to complete and is open to Melbourne residents. Participants will be eligible to win one of fifty \$20 digital gift vouchers.

The transport system of a city plays a vital role in its liveability.



melbournemoves.com/study-1

Scan for more information, or contact Abby Robinson at abby.robinson1@unimelb.edu.au

Stretch & Strengthen For Women

This floor-based class is gentle and low impact. It is aimed at improving flexibility, balance, spinal mobility and co-ordination. No prior experience necessary.

Wednesdays
10am - 11am \$20/month

Kensington Neighbourhood House
www.kensingtonneighbourhoodhouse.com

Creative Art For Kids

Explore the creative arts and use your imagination. Discover new techniques and experiment with making art in a fun and relaxed environment.

Tuesdays or Wednesdays
3.30pm - 4.15pm (5-8 years)
4.30pm - 5.30pm (9-12 years)



ph. 9376 6366

WHAT'S ON August



Keep up-to-date with everything happening in your neighbourhood and experience some great local events.



AFFORDABLE HOUSING INFO SESSION

Join an online session to hear the City of Melbourne present the Affordable Housing consultation findings, and a summary of the car parking studies in North Melbourne. Register to attend.

participate.melbourne.vic.gov.au

THURS 15 / SAT 17 AUGUST



THE SPLENDID ANOMALY

Using live drawing, animation and sound, *The Splendid Anomaly* is a semi-autobiographical solo-performance by Ahmarnya Price, about finding agency within times of systemic failure and rapid change.

Arts House – North Melbourne Town Hall

27 – 31 AUGUST



KENSINGTON MARKET

Kensington Market, held monthly at the Kensington Town Hall, highlights the talent and craftsmanship of a wonderful group of inner-city makers.

Kensington Town Hall, 30-34 Bellair St

SUNDAY, 18 AUGUST, 10AM – 3PM



DOUBLE SEVENTH FESTIVAL

This event aims to empower modern independent women by encouraging them to develop and showcase their unique talents and skills. Celebrate diversity through music and dance.

Meat Market, 3 Blackwood St, North Melb

SATURDAY 24 AUGUST, 11AM – 5PM

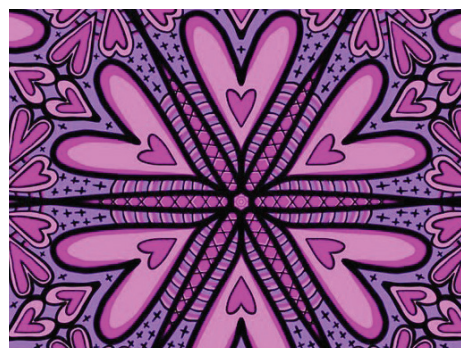


SETE DE SETEMBRO PARTY

If you needed an excuse to party, then Bonehead Brewing has one for you! From 1pm the Taproom will feature Brazilian music and incredible BBQ from the Brazilian grill masters at BrazOZ.

Bonehead Brewing, 86 Parsons St, Kensington

SATURDAY 7 SEPTEMBER, 1PM – 11PM



LOVE.EXE

Navigate a playful, immersive space where shrines devoted to iconic videogame characters are infused with a vibrant collision of geek culture, kitsch romance and Jarra Karalinar Steel's signature Blak style.

Arts House – North Melbourne Town Hall

30 AUGUST – 28 SEPTEMBER



COMEDY FESTIVAL SHOWCASE

Melbourne Comedy Festival favourites are back in town! Sample the Comedy Festival shows from this year and last year – laughter guaranteed.

thecomicslounge.com.au

THROUGHOUT AUGUST



TECH HELP FOR OLDER PEOPLE

Tech Connect offers FREE weekly one-on-one hour sessions and monthly group workshops with trained and skilled "Lively Tech Helpers". Bookings essential.

Kensington Neighbourhood Centre
healthyageing@melbourne.vic.gov.au
9376 9743

FRIDAYS, 9.30AM – 12.30PM



TECH HELP FOR OLDER PEOPLE NTH MELB

Tech Connect offers FREE weekly one-on-one hour sessions and monthly group workshops with trained and skilled "Lively Tech Helpers". Bookings essential.

Jean McKendry Neighbourhood Centre
healthyageing@melbourne.vic.gov.au
9328 1665

FRIDAYS, 9.30AM – 12.30PM



PRESERVE YOUR PRINTED PHOTOS

This free workshop at North Melbourne Library will guide you through the process of sorting your printed photos, share best scanning practices and how to archive your prints to preserve them for the future.

trybooking.com/events/landing/1253907

TUESDAY, 20 AUG, 5.30PM – 7PM

CHATTY CAFE

Enjoy a chat and a cuppa at
Chatty Café

 Kensington Neighbourhood Centre
18 Anthony Street, Kensington

 Every Thursday
  1pm to 3pm

CHATTY CAFE

Join us for a cuppa and afternoon tea, play our board games and puzzles and explore our beautiful sensory garden and mini library, with pre-loved library books to keep.

Kensington Neighbourhood Centre

EVERY THURSDAY, 1PM – 3PM

Business Directory

POLITICIAN

ELLEN SANDELL

STATE MP FOR MELBOURNE

(03) 9328 4637 office@ellensandell.com 60 Leicester St Carlton VIC 3053

PRECINCT

NORTH + WEST MELBOURNE PRECINCT ASSOCIATION




SCHOOL

www.haileybury.vic.edu.au



HAILEYBURY

KEYSBOROUGH BRIGHTON BERNICK CITY BEIJING

www.sccmelb.catholic.edu.au
273 Victoria St, West Melbourne

9321 9200



SIMONDS CATHOLIC COLLEGE

The Melbourne City Council elections

Held by postal vote
in October 2024.



Councils play a major role in delivering
services to residents and businesses.

Your vote makes a difference.



Scan the QR code for more information,
visit elections.melbourne.vic.gov.au
or call 1300 735 427.



Interpreter services
We cater for people of all backgrounds
Please call 03 9280 0726

